

## Periodic Trends within a Series of Five-Coordinate Thiolate-Ligated $[M^{II}(S^{Me_2}N_4(tren))]^+$ ( $M = Mn, Fe, Co, Ni, Cu, Zn$ ) Complexes, Including a Rare Example of a Stable $Cu^{II}$ –Thiolate

Lisa M. Brines, Jason Shearer, Jessica K. Fender, Dirk Schweitzer, Steven C. Shoner, David Barnhart,<sup>§</sup> Werner Kaminsky,<sup>§</sup> Scott Lovell,<sup>§</sup> and Julie A. Kovacs\*

The Department of Chemistry, University of Washington, Box 351700, Seattle, Washington 98195-1700

Received July 19, 2007

A series of five-coordinate thiolate-ligated complexes  $[M^{II}(tren)N_4S^{Me_2}]^+$  ( $M = Mn, Fe, Co, Ni, Cu, Zn$ ;  $tren = tris(2-aminoethyl)amine$ ) are reported, and their structural, electronic, and magnetic properties are compared. Isolation of dimeric  $[Ni^{II}(SN_4(tren)-RS^{dang})_2]$  (“dang” = dangling, uncoordinated thiolate supported by H bonds), using the less bulky  $[(tren)N_4S]^-$  ligand, pointed to the need for gem-dimethyls adjacent to the sulfur to sterically prevent dimerization. All of the gem-dimethyl derivatized complexes are monomeric and, with the exception of  $[Ni^{II}(S^{Me_2}N_4(tren))]^+$ , are isostructural and adopt a tetragonally distorted trigonal bipyramidal geometry favored by ligand constraints. The nickel complex uniquely adopts an approximately ideal square pyramidal geometry and resembles the active site of Ni-superoxide dismutase (Ni-SOD). Even in coordinating solvents such as MeCN, only five-coordinate structures are observed. The  $M^{II}$ –S thiolate bonds systematically decrease in length across the series ( $Mn-S > Fe-S > Co-S > Ni-S \sim Cu-S < Zn-S$ ) with exceptions occurring upon the occupation of  $\sigma^*$  orbitals. The copper complex,  $[Cu^{II}(S^{Me_2}N_4(tren))]^+$ , represents a rare example of a stable  $Cu^{II}$ –thiolate, and models the perturbed “green” copper site of nitrite reductase. In contrast to the intensely colored, low-spin Fe(III)–thiolates, the  $M(II)$ –thiolates described herein are colorless to moderately colored and high-spin (in cases where more than one spin-state is possible), reflecting the poorer energy match between the metal d- and sulfur orbitals upon reduction of the metal ion. As the d-orbitals drop in energy proceeding across the series  $M^{2+}$  ( $M = Mn, Fe, Co, Ni, Cu$ ), the sulfur-to-metal charge-transfer transition moves into the visible region, and the redox potentials cathodically shift. The reduced  $M^{+1}$  oxidation state is only accessible with copper, and the more oxidized  $M^{+4}$  oxidation state is only accessible for manganese.

### Introduction

A comprehensive understanding of the influence of thiolate ligands on the electronic, magnetic, and reactivity properties of first-row transition metal ions is essential if we are to fully understand why nature uses cysteine residues to promote specific biological functions in metalloenzymes.<sup>1–4</sup>

Cysteinate-ligated metalloenzymes and metalloproteins promote a number of critical biological processes including electron transfer,<sup>5–7</sup> toxic radical scavenging,<sup>8–13</sup> the degradation and excretion of toxic substances,<sup>14</sup> strong bond activation,<sup>2,14,15</sup> enzyme activation,<sup>16,17</sup> and the formation of

\* To whom correspondence should be addressed. E-mail: kovacs@chem.washington.edu.

<sup>§</sup> UW staff crystallographers.

- (1) Krishnamurthy, D.; Kasper, G. D.; Namuswe, F.; Kerber, W. D.; Sarjeant, A. N.; Moënne-Loccoz, P.; Goldberg, D. P. *J. Am. Chem. Soc.* **2006**, *128*, 14222–14223.
- (2) Kovacs, J. A. *Chem. Rev.* **2004**, *104*, 825–848.
- (3) Holm, R. H.; Kennepohl, P.; Solomon, E. I. *Chem. Rev.* **1996**, *96*, 2239–2314.
- (4) Lippard, S. J.; Berg, J. M. *Principles of Bioinorganic Chemistry*; University Science: Mill Valley, CA, 1994.

- (5) Solomon, E. I. *Inorg. Chem.* **2006**, *45*, 8012–8025.
- (6) Gray, H. B.; Malström, B.; Williams, R. J. P. *J. Biol. Inorg. Chem.* **2000**, *5*, 551–559.
- (7) Rao, P. V.; Holm, R. H. *Chem. Rev.* **2004**, *104*, 527–560.
- (8) Rodrigues, J. V.; Abreu, I. A.; Cabelli, D.; Teixeira, M. *Biochemistry* **2006**, *45*, 9266–9278.
- (9) Brines, L. M.; Kovacs, J. A. *Eur. J. Inorg. Chem.* **2007**, 29–38.
- (10) Kurtz, D. M. Jr. *Acc. Chem. Res.* **2004**, *37*, 902–908.
- (11) Fiedler, A. T.; Bryngelson, P. A.; Maroney, M. J.; Brunold, T. C. *J. Am. Chem. Soc.* **2005**, *127*, 5449–5462.
- (12) Wuerges, J.; Lee, J.-W.; Yim, Y.-I.; Yim, H.-S.; Kang, S.-O.; Carugo, K. D. *Proc. Natl. Acad. Sci. U.S.A.* **2004**, *101*, 8569–8574.
- (13) Shearer, J.; Long, L. M. *Inorg. Chem.* **2006**, *45*, 2358–2360.

key metabolic intermediates.<sup>18,19</sup> Metal ions are essential components of biological systems because they readily promote reactions (such as electron transfer, strong bond activation, and controlled radical reactions) that would otherwise be impossible.<sup>2–4</sup> Mechanistic pathways in metalloenzymes are controlled by the metal ion's electronic and magnetic properties, which are tuned by the coordinated ligands, and subtly altered by H-bonding interactions within the protein, or interactions with nearby metal ions.<sup>20</sup> The amino-acid heteroatoms which connect metal ions to proteins can have a dramatic influence on key properties such as redox potential, metal ion Lewis acidity,<sup>21</sup> electron-transfer rates, and HOMO/LUMO orbital energies. For example, replacing the N<sup>His</sup> ligand in hemoglobin with a S<sup>cys</sup> in cytochrome P450, dramatically alters the function from that of a dioxygen carrier, to one which activates O<sub>2</sub> and catalyzes the oxidation of unactivated hydrocarbons.<sup>22</sup> A correlation between structure, key properties, and function can be most readily obtained by building small molecular analogues of these sites.<sup>3</sup> Multidentate ligands are generally required to maintain a relatively rigid structure. However, the synthesis of multidentate ligands incorporating thiolates can be challenging<sup>23</sup> given the relative instability of the thiolate group toward both electrophilic attack and oxidative damage. Furthermore, higher-valent transition-metal thiolates can be difficult to synthesize because they are prone to autoreduction and disulfide formation. The synthesis of complexes containing an open-coordination site, to allow for the possible binding of biologically relevant substrates, is especially difficult, and requires the use of steric bulk, non-coordinating solvents, and strict avoidance of potentially coordinating counterions.<sup>24–27</sup>

Recently we reported a rare example of a coordinatively unsaturated thiolate-ligated Fe<sup>II</sup> complex [Fe<sup>II</sup>(S<sup>Me2</sup>N<sub>4</sub>(tren))](PF<sub>6</sub>) (1), that reacts with HO<sub>2</sub> to afford six-coordinate [Fe<sup>III</sup>(S<sup>Me2</sup>N<sub>4</sub>(tren))(MeCN)]<sup>2+</sup> via a peroxide intermediate [Fe<sup>III</sup>(S<sup>Me2</sup>N<sub>4</sub>(tren))(OOH)]<sup>+</sup> (2).<sup>28,29</sup> Thiolate-ligated 1 maintains a five coordinate structure, despite being crystallized from a coordinating solvent (MeCN). Considering the relative scarcity of five-coordinate complexes containing first-row transition-metals in a heteroleptic thiolate/nitrogen coordination environment,<sup>23</sup> and in particular Cu(II) thiolates, we decided to prepare a series of first-row transition-metal complexes derived from our [S<sup>Me2</sup>N<sub>4</sub>(tren)]<sup>1-</sup> ligand. Herein, we describe the synthesis of a series of complexes [M<sup>II</sup>(S<sup>Me2</sup>N<sub>4</sub>(tren))] (M<sup>II</sup> = Mn<sup>II</sup>, Co<sup>II</sup>, Ni<sup>II</sup>, Cu<sup>II</sup>, and Zn<sup>II</sup>), compare their structural, electronic, and magnetic properties.

Experimental Section

## Experimental Section

**General Methods.** All reactions were performed using standard Schlenk techniques under an atmosphere of dinitrogen. Reagents were all obtained from Aldrich Chemical Co. and were used without further purifications. Solvents were purified through standard procedures.<sup>30</sup> 3-Methyl-3-mercapto-2-butanone was prepared according to a published procedure.<sup>31</sup> NMR spectra were recorded on a Bruker DPX 500 FTNMR spectrometer and referenced to the residual protio solvent. Temperatures were determined using van Geets' methods.<sup>32</sup> <sup>1</sup>H NMR chemical shifts (δ) are reported in parts per million (ppm) and coupling constants (J) are reported in Hz. IR spectra were obtained as KBr pellets and are recorded on a Perkin Elmer 1700 FT-IR. EPR spectra were obtained using a Varian CW-EPR spectrometer at 4 K equipped with an Oxford helium cryostat. Cyclic voltammograms were recorded in MeCN solutions with Bu<sub>4</sub>N(PF<sub>6</sub>) (0.100 M) as the supporting electrolyte, using a EG&G Princeton Applied Research potentiostat with a glassy carbon working electrode, an SCE reference electrode, and a platinum auxiliary electrode. Electronic absorption spectra were recorded using a Hewlett-Packard 8453 diode array spectrometer. Magnetic moments were determined via Evans' method corrected for superconducting solenoids at 301.5 MHz<sup>33,34</sup> or by using a Quantum Design SQUID Magnetometer. Elemental analyses were performed by Galbraith Laboratories (Knoxville, TN), or Atlantic Microlab, Inc. (Norcross, GA).

**Preparation of [Ni<sup>II</sup>(SN<sub>4</sub>(tren)-RS<sup>dang</sup>)<sub>2</sub>·4H<sub>2</sub>O (3; dang = dangling, uncoordinated thiolate).** Nickel(II) acetate tetrahydrate (0.75 g, 3.0 mmol) in methanol (20 mL) was added slowly, via cannula, to a stirred solution (20 mL) of 2,5 dihydroxy-2,5 dimethyl-1,4-dithiane<sup>35</sup> (0.54 g, 3.0 mmol) in methanol at 0 °C. The solution immediately turned red/brown and, by the end of the addition, began to deposit a dark red-brown microcrystalline solid. After the mixture was stirred for an hour at 0 °C, sodium hydroxide (0.24 g, 6.0 mmol) in 10 mL of methanol was added, followed by tris(2-aminoethyl)amine (tren) (0.44 g, 3.0 mmol), also in 10 mL of methanol. This caused the precipitate to dissolve and the solution to turn dark olive-brown. The reaction mixture was then cooled overnight (5 °C), and the volume of the resulting deep blue-green solution was reduced under vacuum to ~15 mL. This resulted in

- (14) Denisov, I. G.; Makris, T. M.; Sligar, S. G.; Schlichting, I. *Chem. Rev.* **2005**, *105*, 2253–2277.
- (15) Ogata, H.; Hirota, S.; Nakahara, A.; Komori, H.; Shibata, N.; Kato, T.; Kano, K.; Higuchi, Y. *Structure* **2005**, *13*, 1635–1642.
- (16) Rajagopalan, P. T. R.; Yu, X. C.; Pei, D. *J. Am. Chem. Soc.* **1997**, *119*, 12418–12419.
- (17) Chang, S.; Karambelkar, V. V.; diTargiani, R. C.; Goldberg, D. P. *Inorg. Chem.* **2001**, *40*, 194–195.
- (18) Lindahl, P. A. *Biochemistry* **2002**, *41*, 2097–2105.
- (19) Rao, P. V.; Bhaduri, S.; Jiang, J.; Hong, D.; Holm, R. H. *J. Am. Chem. Soc.* **2005**, *127*, 1933–1945.
- (20) Kovacs, J. A. *Science* **2003**, *299*, 1024–1025.
- (21) Brines, L. M.; Villar-Acevedo, G.; Kitagawa, T.; Swartz, R. D.; Lugo-Mas, P.; Kaminsky, W.; Benedict, J. B.; Kovacs, J. A. *Inorg. Chim. Acta* **2007**, in press.
- (22) Adachi, S.-I.; Nagano, S.; Ishimori, K.; Watanabe, Y.; Morishima, I.; Egawa, T.; Kitagawa, T.; Makino, R. *Biochemistry* **1993**, *32*, 241–252.
- (23) Krishnamurthy, D.; Sarjeant, A. N.; Goldberg, D. P.; Caneschi Totti, F.; Zakharov, L. N.; Rheingold, A. L. *Chem.—Eur. J.* **2005**, *11*, 7328–7341.
- (24) Yandulov, D. V.; Schrock, R. R. *J. Am. Chem. Soc.* **2002**, *124*, 6252–6253.
- (25) Smith, J. M.; Sadique, A. R.; Cundari, T. R.; Rodgers, K. R.; Lukat-Rodgers, G.; Lachicotte, R. J.; Flaschenriem, C. J.; Vela, J.; Holland, P. L. *J. Am. Chem. Soc.* **2006**, *128*, 756–769.
- (26) O'Keefe, B. J.; Breyfogle, L. E.; Hillmyer, M. A.; Tolman, W. B. *J. Am. Chem. Soc.* **2002**, *124*, 4384–4393.
- (27) Brown, S. D.; Betley, T. A.; Peters, J. C. *J. Am. Chem. Soc.* **2003**, *125*, 322–323.

- (28) Shearer, J.; Scarrow, R. C.; Kovacs, J. A. *J. Am. Chem. Soc.* **2002**, *124*, 11709–11717.
- (29) Shearer, J.; Nehring, J.; Kaminsky, W.; Kovacs, J. A. *Inorg. Chem.* **2001**, *40*, 5483–5484.
- (30) Perrin, D. D.; Armarego, W. L. F.; Perrin, D. R. *Purification of Laboratory Chemicals*, 2nd ed.; Pergamon Press: Elmsford, NY, 1980.
- (31) Ellison, J. J.; Nienstedt, A.; Shoner, S. C.; Barnhart, D.; Cowen, J. A.; Kovacs, J. A. *J. Am. Chem. Soc.* **1998**, *120*, 5691–5700.
- (32) Van Geet, A. L. *Anal. Chem.* **1968**, *40*, 2227–2229.
- (33) Evans, D. A. *J. Chem. Soc.* **1959**, 2005.
- (34) Live, D. H.; Chan, S. I. *Anal. Chem.* **1970**, *42*, 791.
- (35) Hromatka, O.; Engel, E. *Monatsh. Chem.* **1948**, *78*, 29.

the formation of a light blue precipitate that was then redissolved by the addition of 15 mL of H<sub>2</sub>O, with warming. Diethyl ether was then added until the solution was saturated, and the resulting solution was placed in a  $-25\text{ }^\circ\text{C}$  freezer for 2–3 days to afford 438 mg (40%) of dark blue crystals of **3**. Elemental Analysis for Ni<sub>2</sub>C<sub>24</sub>H<sub>48</sub>N<sub>8</sub>S<sub>4</sub>·2H<sub>2</sub>O Calcd: C, 38.99; H, 7.09; N, 15.15. Found: C, 37.90; H, 6.29; N, 13.77.  $\mu_{\text{eff}}(\text{D}_2\text{O})/\text{Ni} = 2.89$  Absorption spectrum (MeOH):  $\lambda_{\text{max}}$  ( $\epsilon$  (m<sup>-1</sup> cm<sup>-1</sup>)) 584 (32), 884(30) nm. Diffuse reflectance spectrum (solid state):  $\lambda_{\text{max}}$  ( $\epsilon$  (m<sup>-1</sup> cm<sup>-1</sup>)) 402, 578, 883 nm. Absorption spectrum (H<sub>2</sub>O):  $\lambda_{\text{max}}$  ( $\epsilon_{\text{M}}$ ) 570 (41), 808 (25) nm. IR(neat solid):  $\nu_{\text{C=N}}$  1670,  $\nu_{\text{C=N}}$  1616 cm<sup>-1</sup>.

**Preparation of  $[\text{Ni}^{II}(\text{S}^{Me_2}\text{N}_4(\text{tren}))](\text{PF}_6)$  (**4**).** Sodium methoxide (216 mg, 4.00 mmol), 3-methyl-3-mercapto-2-butanone (472 mg, 4.00 mmol), and tren (585 mg, 4.00 mmol) were dissolved in 50 mL of MeOH and cooled to  $-40\text{ }^\circ\text{C}$ . Anhydrous NiCl<sub>2</sub> was then slurried in 10 mL of cold MeOH, and the ligand solution was then added dropwise to the NiCl<sub>2</sub> solution resulting in a green solution. This was allowed to warm to room temperature and was stirred for 4 days, and the solution became a dark rust color. The solids were removed by passing the solution through a plug of Celite; the methanol was removed under reduced pressure, and the solid was dissolved in an MeCN solution of NaPF<sub>6</sub> (678 mg, 4.10 mmols) and stirred for 5 h. The resulting NaCl was removed via filtration through Celite; the MeCN was concentrated to  $\sim 10$  mL, and diethyl ether (30 mL) was layered over top of the solution. After 6 days at  $-40\text{ }^\circ\text{C}$ , red crystals of **4** had formed (1.04 g, 57.0% yield). Electronic absorption spectrum (MeCN):  $\lambda_{\text{max}}$  (nm) ( $\epsilon$  (M<sup>-1</sup> cm<sup>-1</sup>)): 275 (2394), 410 (330). IR:  $\nu_{\text{C=N}}$  1605 cm<sup>-1</sup>. Redox potential (MeCN vs SCE):  $E_{\text{p}^{\text{a}}}(\text{Ni}^{\text{III/II}}) = +325$  mV (irreversible). Magnetic moment (302.1 K, MeCN solution): 2.86  $\mu_{\text{B}}$ . Elemental Analysis for NiC<sub>11</sub>H<sub>25</sub>N<sub>4</sub>SPF<sub>6</sub> Calcd: C, 29.24; H, 5.61; N, 12.48. Found: C, 29.00; H, 5.71; N, 12.63.

**Preparation of  $[\text{Mn}^{II}(\text{S}^{Me_2}\text{N}_4(\text{tren}))](\text{PF}_6)$  (**5**).** Manganese sulfate monohydrate (676 mg, 4.00 mmol) was slurried in methanol (10 mL). To this was added 3-methyl-3-mercapto-2-butanone (472 mg, 4.00 mmol) and sodium methoxide (216 mg, 4.00 mmol) in methanol (25 mL). While the mixture was stirred, tris(2-aminoethyl)amine (tren) (585 mg, 4.00 mmol) was added dropwise. After 5 min, sodium hexafluorophosphate (672 mg, 4.00 mmol) was added. The solution was stirred overnight at room temperature; the solvent was evaporated, and the residue redissolved in acetonitrile (20 mL). The solution was stirred for 2 h and filtered again through Celite. Ether (10 mL) was carefully layered on top, and the colorless solution was cooled to  $-40\text{ }^\circ\text{C}$ . Overnight, pale colorless needles of **5** had formed which were suitable for X-ray diffraction (527 mg, 29.6% yield). Electronic absorption spectrum (MeCN):  $\lambda_{\text{max}}$  (nm) ( $\epsilon$  (M<sup>-1</sup>cm<sup>-1</sup>)): 240 (2911). IR:  $\nu_{\text{C=N}}$  1647 cm<sup>-1</sup>. Redox potential (MeCN vs SCE):  $E_{\text{p}^{\text{a}}}(\text{Mn}^{\text{III/II}}) = +270$  mV (quasi-reversible),  $E_{1/2}(\text{Mn}^{\text{IV/III}}) = +705$  mV. Magnetic moment (solid state): 6.01  $\mu_{\text{B}}$ .

**Preparation of  $[\text{Co}^{II}(\text{S}^{Me_2}\text{N}_4(\text{tren}))](\text{PF}_6)$  (**6**).** Sodium hydroxide (120 mg, 3.00 mmols) was dissolved in 120 mL of MeOH, and 3-methyl-3-mercapto-2-butanone (335 mg, 3.00 mmols) was added dropwise. To this, cobalt(II) chloride hexahydrate (714 mg, 3.00 mmols) in 15 mL of MeOH was added dropwise. After the mixture was stirred for 10 min, tris(2-aminoethyl)amine (tren) (440 mg, 3.00 mmols) was added dropwise, followed by the addition of 680 mg of KPF<sub>6</sub> (3.60 mmols). The solution was stirred at room temperature for 24 h, at which time the solids were filtered through a plug of Celite. The volatiles were removed under reduced pressure, and the resulting green powder was dissolved in 15 mL of MeCN. Diethyl ether (50 mL) was layered on top of this green solution, and the two layers were allowed to diffuse together over several

days affording 1.26 g of **6** (93.1% yield). Electronic absorption spectrum (MeCN):  $\lambda_{\text{max}}$  (nm) ( $\epsilon$  (M<sup>-1</sup> cm<sup>-1</sup>)): 195 (12 500), 363 (950), 465 (160), 600 (130). IR:  $\nu_{\text{C=N}}$  1646 cm<sup>-1</sup>. Redox potential (MeCN vs SCE):  $E_{\text{p}^{\text{a}}}(\text{Co}^{\text{III/II}}) = +270$  mV (irreversible). Magnetic moment (MeCN, 294 K): 4.05  $\mu_{\text{B}}$ . Elemental Analysis for CoC<sub>11</sub>H<sub>25</sub>N<sub>4</sub>SPF<sub>6</sub> Calcd: C, 29.40; H, 5.61; N, 12.47. Found: C, 28.93; H, 5.56; N, 12.49.

**Preparation of  $[\text{Cu}^{II}(\text{S}^{Me_2}\text{N}_4(\text{tren}))](\text{PF}_6)$  (**7**).** Sodium methoxide (216 mg, 4.00 mmols) was dissolved in 20 mL of methanol, followed by the addition of 472 mg of 3-mercapto-3-methyl-2-butanone (4.00 mmols) and 585 mg of tren (4.00 mmols). Copper(II) acetate monohydrate (799 mg, 4.00 mmols) was then dissolved in 10 mL of methanol and added dropwise to the ligand solution. After the mixture was stirred for 10 min, 678 mg of sodium hexafluorophosphate (4.01 mmols) in 10 mL of methanol was added, and the solution was stirred overnight at room temperature. The resulting dark green solution was filtered to remove all insoluble products; the methanol was removed, and the resulting green powder was dissolved in 10 mL of MeCN. This was filtered and layered with 40 mL of diethyl ether. The two layers were allowed to diffuse together overnight at room temperature to afford dark green crystals of **7** (687 mg, 33.7% yield). Electronic absorption spectrum (MeCN):  $\lambda_{\text{max}}$  (nm) ( $\epsilon$  (M<sup>-1</sup> cm<sup>-1</sup>)): 216 (3280), 236 (3400), 382 (3340), 618 (315). EPR spectrum (MeOH/EtOH glass):  $g_{\parallel} = 2.17$  ( $A_{\parallel}(\text{Cu}) = 150 \times 10^{-4}$  cm<sup>-1</sup>),  $g_{\perp} = 2.07$ . IR:  $\nu_{\text{C=N}}$  1659 cm<sup>-1</sup>. Redox potential (MeCN vs SCE):  $E_{1/2}(\text{Cu}^{\text{II/I}}) = -703$  mV (quasi-reversible),  $E_{\text{p}^{\text{a}}}(\text{Cu}^{\text{III/II}}) = +690$  mV (irreversible). Magnetic moment (302.1 K, MeCN solution): 1.97  $\mu_{\text{B}}$ . Elemental Analysis for CuC<sub>11</sub>H<sub>25</sub>N<sub>4</sub>SPF<sub>6</sub> Calcd: C, 29.11; H, 5.55; N, 12.34. Found: C, 29.02; H, 5.54; N, 11.97.

**Preparation of  $[\text{Zn}^{II}(\text{S}^{Me_2}\text{N}_4(\text{tren}))](\text{PF}_6)$  (**8**).** This was prepared in a manner analogous to that of **7**, except that 541 mg of zinc(II) chloride was used in place of the copper(II) acetate. This afforded **8** as large yellow tinted crystals (1.79 g, 98.4% yield). <sup>1</sup>H NMR (MeCN-*d*<sub>3</sub>): 3.55 (2 H, t,  $J = 8$  Hz, CH<sub>2</sub>-N=C), 3.28 (2 H, t,  $J = 8$  Hz, CH<sub>2</sub>-N(CH<sub>2</sub>)<sub>2</sub>), 2.94 (m, 4H, (CH<sub>2</sub>)<sub>2</sub>NCH<sub>2</sub>), 2.86 (m, 2H, (HCH)NH<sub>2</sub>), 2.74 (m, 2H, (HCH)NH<sub>2</sub>), 2.20 (s, 3H, CH<sub>3</sub>), 1.61 (s, 6H, (CH<sub>3</sub>)<sub>2</sub>C). Electronic absorption spectrum (MeCN): 219 (4 800), 231 (sh), 269 (394). IR:  $\nu_{\text{C=N}}$  1653 cm<sup>-1</sup>. Elemental Analysis for ZnC<sub>11</sub>H<sub>25</sub>N<sub>4</sub>SPF<sub>6</sub> Calcd: C, 28.99; H, 5.53; N, 12.29. Found: C, 29.08; H, 5.55; N, 12.41.

**X-ray Crystallography.** A dark blue 0.25 × 0.30 × 0.35 mm block of **3** was mounted on a glass capillary with epoxy. Data was collected at 25 °C on an Enraf–Nonius CAD4 (Mo K $\alpha$ ,  $\lambda = 0.71073$  Å). Twenty-five reflections in the range  $2\theta = 30\text{--}40^\circ$  were found and centered to determine the cell constants and orientation matrix. The data were corrected for Lorentz and polarization effects using Molen, and an empirical absorption correction, based on a set of  $\psi$  scans ( $\mu = 14.30$  cm<sup>-1</sup>), was applied. The crystal showed no signs of decay. E-statistics (XPREP, SHELXTL PLUS) suggested the centric triclinic space group  $\bar{P}1$ , and this space group was confirmed by satisfactory refinement of the structure to low-error indices. The structure was solved by locating the Ni atom in a Patterson map and confirmed using a direct methods solution. The remaining non-hydrogen atoms were located from successive difference Fourier map calculations. Atom scattering factors were taken from a standard source.<sup>36</sup> Hydrogen atoms positions were determined from a difference map and refined at fixed positions using a riding model. The 4128 observed reflections with  $F > 4\sigma(F)$  were used in the

(36) Cromer, D. T.; Waber, J. T. In *International Tables for X-ray Crystallography*; Kynoch: Birmingham, U.K., 1974; Vol. IV.



**Table 1.** Crystal Data, Intensity Collections,<sup>a</sup> and Structure Refinement Parameters for [Ni<sup>II</sup>(SN<sub>4</sub>(tren)-RS<sup>dan</sup>)<sub>2</sub>·4H<sub>2</sub>O] (3), [Ni<sup>II</sup>(S<sup>Me</sup><sub>2</sub>N<sub>4</sub>(tren))]Cl (4), [Mn<sup>II</sup>(S<sup>Me</sup><sub>2</sub>N<sub>4</sub>(tren))](PF<sub>6</sub>) (5), [Co<sup>II</sup>(S<sup>Me</sup><sub>2</sub>N<sub>4</sub>(tren))](PF<sub>6</sub>) (6), [Cu<sup>II</sup>(S<sup>Me</sup><sub>2</sub>N<sub>4</sub>(tren))](PF<sub>6</sub>) (7), and [Zn<sup>II</sup>(S<sup>Me</sup><sub>2</sub>N<sub>4</sub>(tren))] (8).

	3	4	5	6	7	8
formula	Ni <sub>2</sub> C <sub>24</sub> H <sub>52</sub> N <sub>8</sub> S <sub>4</sub> O <sub>2.5</sub>	NiC <sub>11</sub> H <sub>25</sub> ClN <sub>4</sub> S	MnC <sub>11</sub> H <sub>25</sub> N <sub>4</sub> F <sub>6</sub> PS	CoC <sub>11</sub> H <sub>25</sub> N <sub>4</sub> F <sub>6</sub> PS	CuC <sub>11</sub> H <sub>25</sub> N <sub>4</sub> F <sub>6</sub> PS	ZnC <sub>11</sub> H <sub>25</sub> N <sub>4</sub> F <sub>6</sub> PS
MW	738.4	339.57	445.32	449.31	453.92	455.75
<i>T</i> (K)	295	161(2)	130(2)	153(2)	130(2)	130(2)
unit cell	triclinic	monoclinic	orthorhombic	orthorhombic	orthorhombic	orthorhombic
<i>a</i> (Å)	8.936(2)	19.1240(3)	8.194(4)	8.1770(6)	8.1120(5)	8.1600(3)
<i>b</i> (Å)	10.152(2)	7.7534(3)	12.831(5)	12.7180(6)	12.7400(4)	12.7280(4)
<i>c</i> (Å)	10.458(2)	21.3505(7)	18.198(8)	17.977(1)	18.031(1)	17.9620(5)
$\alpha$ (deg)	61.71(3)	90	90	90	90	90
$\beta$ (deg)	81.80(3)	100.139(2)	90	90	90	90
$\gamma$ (deg)	87.39(3)	90	90	90	90	90
<i>V</i> (Å <sup>3</sup> )	826.2(4)	3116.3(2)	1913(1)	1869.5(2)	1863.4(2)	1865.5(1)
<i>Z</i>	1	8	4	4	4	4
<i>d</i> <sub>calcd</sub> (g cm <sup>-3</sup> )	1.484	1.448	1.546	1.596	1.618	1.572
space group	<i>P</i> 1	<i>C</i> 2/ <i>c</i>	<i>P</i> 2 <sub>1</sub> 2 <sub>1</sub>	<i>P</i> 2 <sub>1</sub> 2 <sub>1</sub>	<i>P</i> 2 <sub>1</sub> 2 <sub>1</sub>	<i>P</i> 2 <sub>1</sub> 2 <sub>1</sub>
<i>R</i>	0.0458 <sup>b</sup>	0.0420 <sup>b</sup>	0.0583 <sup>b</sup>	0.0375 <sup>b</sup>	0.0417 <sup>b</sup>	0.0280 <sup>b</sup>
<i>R</i> <sub>w</sub>	0.064 <sup>c</sup>	0.1221 <sup>c</sup>	0.1592 <sup>c</sup>	0.1030 <sup>c</sup>	0.0916 <sup>d</sup>	0.0691 <sup>d</sup>
GOF	1.22	0.789	1.04	1.09	0.995	1.01

<sup>a</sup> Mo K $\alpha$  ( $\lambda = 0.71070$  Å) radiation, graphite monochromator,  $-90$  °C. <sup>b</sup>  $R = \sum||F_o| - |F_c|| / \sum|F_o|$ . <sup>c</sup>  $R_w = [\sum w(|F_o| - |F_c|)^2 / \sum w F_o^2]^{1/2}$ , where  $w^{-1} = 1/[\sigma_{count}^2 + (0.05 F^2)^2 / 4F^2]$ . <sup>d</sup>  $R_w = \{[\sum w(F_o^2 - F_c^2)^2 / \sum w(F_o^2)^2]\}^{1/2}$ , where  $w = 1/[\sigma^2(F_o^2) + (0.1395P)^2 + 1.3703P]$  and where  $P = [F_o^2 + 2F_c^2]/3$ .

refinement of **3**, and the final full-matrix least-squares refinement converged at  $R(R_w) = 0.0458$  with 185 parameters. A final difference map showed no peaks larger than  $0.75$  e<sup>-</sup> Å<sup>-3</sup>. The asymmetric unit of **3** consists of one-half of a Ni<sub>2</sub> dimer and two H<sub>2</sub>O solvent molecules, one full occupancy and one 1/4 occupancy.

A red  $0.23 \times 0.16 \times 0.08$  mm plate of **4** was mounted on a glass capillary with oil. Data was collected at  $-137$  °C on a Nonius Kappa CCD diffractometer. The crystal-to-detector distance was set to 30 mm, and exposure time was 20 s per degree for all data sets with a scan width of  $1.8^\circ$ . The data collection was 40.8% complete to  $28.68^\circ$  in  $\theta$ . A total of 52 638 partial and complete reflections were collected covering the indices  $h = -22$  to 22,  $k = -9$  to 9, and  $l = -26$  to 26; 3519 reflections were symmetry independent, and the  $R_{int} = 0.065$  value indicated that the data was average (average quality = 0.07). Indexing and unit cell refinements indicated a monoclinic *C* lattice in the space group *C*2/*c* (No. 15).

A clear  $0.59 \times 0.26 \times 0.26$  mm needle of **5** was mounted on a glass capillary with oil. Data was collected at  $-143$  °C on a Nonius Kappa CCD diffractometer. The crystal-to-detector distance was set to 30 mm, and exposure time was 30 s per degree for all data sets with a scan width of  $1^\circ$ . The data collection was 86.5% complete to  $25^\circ$  in  $\theta$ . A total of 148720 partial and complete reflections were collected covering the indices  $h = -8$  to 9,  $k = -15$  to 15, and  $l = -21$  to 21; 2733 reflections were symmetry independent, and the  $R_{int} = 0.0658$  value indicated that the data was average (average quality = 0.07). Indexing and unit cell refinements indicated a orthorhombic *P* lattice in the space group *P*2<sub>1</sub>2<sub>1</sub> (No. 19). Although the crystal was sufficiently large, it showed a high mosaicity causing the diffraction for higher  $\theta$  angles to be difficult to separate by the numerical algorithm employed in the KAPP CCD spectrometer. As a result, more reflections at higher angle in  $\theta$  turned out to be too much overlapping to be counted in the data statistics. The total diffraction angle  $2\theta$  is sufficiently high to ensure proper evaluation of thermal parameters.

A red/green crystal prism of **6**, cut down to  $0.30 \times 0.38 \times 0.5$  mm, was mounted on a glass capillary with epoxy. The crystals were strongly pleochroic, changing from red-brown to grass green. Data was collected at  $-145$  °C on a Nonius Kappa CCD diffractometer. The crystal-to-detector distance was set to 40 mm, and exposure time was 30 s per degree for all data sets with a scan width of  $1.8^\circ$ . The data collection was 77.6% complete to  $28.26^\circ$  in  $\theta$ . A total of 5046 partial and complete reflections were collected covering the indices  $h = -6$  to 10,  $k = -10$  to 12, and  $l = -21$

to 21; 3241 reflections were symmetry independent, and the  $R_{int} = 0.047$  value indicated that the data was good. Indexing and unit cell refinements indicated a orthorhombic *P* lattice in the space group *P*2<sub>1</sub>2<sub>1</sub> (No. 19).

A green crystal block of **7**, cut down to  $0.22 \times 0.19 \times 0.10$  mm, was mounted on a glass capillary with oil. Data was collected at  $-143$  °C. The crystal-to-detector distance was set to 30 mm, and the exposure time was 15 s per degree for all data sets with a scan width of  $1.9^\circ$ . The data collection was 93.8% complete to  $26.34^\circ$  in  $\theta$ . A total of 13 700 partial and complete reflections were collected covering the indices  $h = 0$  to 10,  $k = 0$  to 13, and  $l = -22$  to 22; 3509 reflections were symmetry independent, and the  $R_{int} = 0.0619$  value indicated that the data was of average quality. Indexing and unit cell refinements indicated a orthorhombic *P* lattice in the space group *P*2<sub>1</sub>2<sub>1</sub> (No. 18).

A clear crystal block of **8**, cut down to  $0.48 \times 0.43 \times 0.31$  mm, was mounted on a glass capillary with oil. Data was collected at  $-143$  °C on a Nonius Kappa CCD diffractometer. The crystal-to-detector distance was set to 30 mm, and the exposure time was 15 s deg<sup>-1</sup> for all data sets with a scan width of  $1^\circ$ . The data collection was 96% complete to  $28.26^\circ$  in  $\theta$ . A total of 12 740 partial and complete reflections were collected covering the indices  $h = 0$  to 10,  $k = 0$  to 16, and  $l = -22$  to 23; 4221 reflections were symmetry independent, and the  $R_{int} = 0.0492$  value indicated that the data was of better than average quality. Indexing and unit cell refinements indicated a orthorhombic *P* lattice in the space group *P*2<sub>1</sub>2<sub>1</sub> (No. 19).

The data for **4–8** were all integrated and scaled using *hkl*-SCALEPACK, and an absorption correction was performed using SORTAV. Solution by direct methods (SIR97, default 4) produced a complete heavy atom-phasing model consistent with the proposed structure. All non-hydrogen atoms were refined anisotropically by full-matrix least-squares methods, while all hydrogen atoms were located using a riding model. Crystal data for **4–8** is presented in Table 1. Selected bond distances and angles are assembled in Table 2.

## Results and Discussion

**Gem-dimethyls Prevent Dimerization.** Monomeric metal thiolates are not trivial to synthesize because they are prone to dimerization and auto-redox processes affording disulfides. Oligomerization is especially prevalent with coordinatively

**Table 2.** Selected Bond Distances (Å) and Bond Angles (deg) for Five-Coordinate  $[\text{Mn}^{\text{II}}(\text{S}^{\text{Me}_2\text{N}_4(\text{tren}))}]^+$  (**5**),  $[\text{Fe}^{\text{II}}(\text{S}^{\text{Me}_2\text{N}_4(\text{tren}))}]^+$  (**1**),  $[\text{Co}^{\text{II}}(\text{S}^{\text{Me}_2\text{N}_4(\text{tren}))}]^+$  (**6**),  $[\text{Ni}^{\text{II}}(\text{S}^{\text{Me}_2\text{N}_4(\text{tren}))}]^+$  (**4**),  $[\text{Cu}^{\text{II}}(\text{S}^{\text{Me}_2\text{N}_4(\text{tren}))}]^+$  (**7**), and  $[\text{Zn}^{\text{II}}(\text{S}^{\text{Me}_2\text{N}_4(\text{tren}))}]^+$  (**8**).

	5	1	6	4	7	8
M–S(1)	2.412(3)	2.3281(9)	2.297(1)	2.256(1)	2.254(1)	2.3220(6)
M–N(1)	2.166(8)	2.091(3)	2.037(3)	2.000(3)	1.977(3)	2.074(1)
M–N(2)	2.334(8)	2.268(3)	2.239(3)	2.097(3)	2.082(3)	2.301(2)
M–N(3)	2.201(8)	2.131(3)	2.087(3)	2.048(3)	2.068(3)	2.083(2)
M–N(4)	2.198(8)	2.117(3)	2.081(3)	2.077(3)	2.171(4)	2.075(2)
N(1)–C(8) <sup>imine</sup>	1.295(11)	1.277(4)	1.272(5)	1.292(4)	1.275(5)	1.272(3)
S(1)–M–N(1)	81.9(3)	84.02(8)	85.8(1)	85.37(8)	86.3(1)	85.35(6)
S(1)–M–N(2)	158.8(2)	163.02(7)	165.39(8)	159.34(9)	170.27(9)	163.88(5)
S(1)–M–N(3)	115.0(3)	108.81(8)	107.0(1)	115.22(8)	103.29(9)	106.86(6)
S(1)–M–N(4)	109.1(2)	107.86(9)	107.8(1)	101.04(8)	100.68(9)	108.74(6)
N(1)–M–N(3)	125.0(3)	124.9(1)	125.9(1)	158.7(1)	135.9(2)	126.41(8)
N(1)–M–N(4)	109.5(3)	110.3(1)	111.3(1)	96.2(1)	111.5(1)	110.83(8)
N(3)–M–N(4)	112.2(3)	115.2(1)	113.6(1)	99.31(1)	108.8(2)	113.32(8)
$\tau$ -value	0.564	0.635	0.658	0.011	0.573	0.624

unsaturated complexes. Steric bulk can, however, be used to circumvent these problematic side-reactions.<sup>37,38</sup> For example, by incorporation of gem-dimethyls adjacent to the thiolates of  $[\text{Fe}^{\text{II}}(\text{S}^{\text{Me}_2\text{N}_4(\text{tren}))}](\text{PF}_6)$  (**1**),<sup>29</sup>  $[\text{Fe}^{\text{III}}(\text{S}_2\text{Me}_2\text{N}_3(\text{Pr}, \text{Pr}))]^+$ ,<sup>31</sup>  $[\text{Fe}^{\text{III}}(\text{S}_2\text{Me}_2\text{N}_3(\text{Et}, \text{Pr}))]^+$ ,<sup>39</sup> and  $[\text{Fe}^{\text{II}}(\text{Py}_2\text{S}(\text{X}))]$  (X = Cl<sup>−</sup>, Br<sup>−</sup>),<sup>23</sup> monomeric five-coordinate structures are obtained. The tripodal *tris*(2-aminoethyl)amine (tren) ligand was used as a scaffold in **1** to favor a pyramidal five-coordinate structure likely to be reactive. Schrock has shown, for example, that a bulky aromatic-substituted deprotonated tren-derivative affords a four-coordinate molybdenum complex that reacts with dinitrogen to afford a functional nitrogenase model.<sup>40</sup> By appending a gem-dimethyl protected thiolate arm onto the tren ligand scaffold, we have been able to generate a functional SOR model containing Fe<sup>2+</sup>.<sup>28,41</sup> In the absence of these gem-dimethyls, dimerization was found to occur with the analogous Ni<sup>2+</sup> complex to afford  $[\text{Ni}^{\text{II}}(\text{SN}_4(\text{tren})\text{-RS}^{\text{dang}})]_2$  (**3**; dang = dangling, uncoordinated thiolate; Figure 1), obtained via a Ni<sup>2+</sup>-templated Schiff-base condensation between *tris*(2-aminoethyl)amine (tren) and  $\alpha$ -thioacetone (CH<sub>3</sub>C(O)CH<sub>2</sub>SH). Isolation of **3** requires the use of protic solvents (Figure S-1), the reason for which became apparent upon inspection of the packing diagram (Figure S-2). Each half of the dimeric unit contains a dangling thiolate (S(2) and S(2a)) that remains uncoordinated to the metal ion. This is quite unusual. Although dangling thioethers<sup>42,43</sup> and dangling protonated thiois<sup>44</sup> have been observed in transition-metal chemistry, we know of no other examples of structures containing a dangling thiolate. Hydrogen bonds involving cocrystallized water molecules (Figure S-1 and

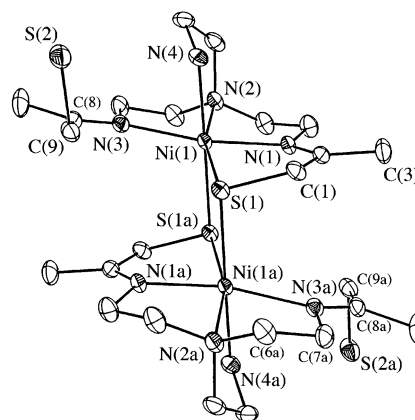
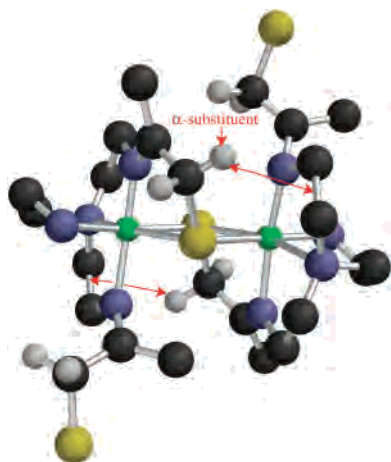
**Figure 1.** ORTEP of dimeric  $[\text{Ni}^{\text{II}}(\text{SN}_4(\text{tren})\text{-RS}^{\text{dang}})]_2 \cdot 2\text{H}_2\text{O}$  (**3**) showing the atom labeling scheme. All hydrogen atoms and H<sub>2</sub>O molecules have been removed for clarity.

Table S-4; S(2)⋯H<sub>2</sub>O(1) = 2.504 Å, S(2)–H–O(1) = 154.7°, S(2)⋯H<sub>2</sub>O(1a) = 2.524 Å, S(2)–H–O(1a) = 159.1°, as well as intra- and intermolecular N–H protons (Figure S-2), stabilize the anionic charge of the dangling thiolates S(2) and S(2a) (Figure 1). Ligand constraints, involving a alkyl thiolate connected to a conformationally restricted sp<sup>2</sup> hybridized carbon C(8) (Figure 1), appear to be responsible for the dangling thiolate arms. Although the dangling arm is free to rotate about the C(9)–C(8) bond, restricted rotation about the imine C(8)=N(3)  $\pi$ -bond prevents coordination to the apical site (occupied by bridging S(1a)) and restricts binding to the equatorial site already occupied by S(1). In other words, the two thiolates S(1) and S(2) compete for binding to the same equatorial site.

The two halves of dimeric **3** are related by a crystallographic center of symmetry, with a Ni(1)⋯Ni(1a) separation of 3.606 Å. The Ni<sup>2+</sup> ions of **3** are six-coordinate in distorted octahedral sites composed of two thiolates (S(1) and S(1a)), both of which are bridging, two imines N(1) and N(3), and two amines N(2) and N(4), one of which (N(4)) is *trans* to the apical thiolate S(1a) (Figure 1). The Ni–S distances fall in the normal range (2.41–2.54 Å) for six-coordinate Ni–thiolates,<sup>45–48</sup> and the Ni(1)–S(1a) bridging distance (2.470(1) Å) is only 0.04 Å longer than the chelated Ni(1)–S(1) distance (2.434(1) Å), indicating that the bridge connecting the two halves of the dimer is moderately strong. In fact, the Ni(1) ion sits 0.037 Å below the S(1)N(1)N(2)N(3) plane toward S(1a). The imines of **3** (N(3) and N(1); Figure 1) are differentiated by their adjacent thiolate arms (metal-bound vs dangling and uncoordinated) and have noticeably different metrical parameters. The Ni–N(3) imine bond (2.192(3) Å) is exceptionally long relative to Ni–N(1) (2.073(2) Å), and most six-coordinate Ni–N(imine) bonds (usual range = 1.98–2.08 Å).<sup>49–53</sup> Signs of strain within the

(37) Maelia, L. E.; Millar, M.; Koch, S. A. *Inorg. Chem.* **1992**, *31*, 4594–600.(38) Millar, M.; Lee, J. F.; Fikar, R. *Inorg. Chim. Acta.* **1996**, *243*, 333–338.(39) Schweitzer, D.; Shearer, J.; Rittenberg, D. K.; Shoner, S. C.; Ellison, J. J.; Loloee, R.; Lovell, S. C.; Barnhart, D. K., J. A. *Inorg. Chem.* **2002**, *41*, 3128–3136.(40) Yandulov, D. V.; Schrock, R. R. *Science* **2003**, *301*, 76–78.(41) Theisen, R. M.; Kovacs, J. A. *Inorg. Chem.* **2005**, *44*, 1169–1171.(42) Kumar, M.; Day, R. O.; Colpas, G. J.; Maroney, M. J. *J. Am. Chem. Soc.* **1989**, *111*, 5974–6.(43) Ragunathan, K. G.; Bharadwaj, P. K. *J. Chem. Soc., Dalton Trans.* **1992**, 2417–2422.(44) Hsieh, T.-C.; Gebreyes, K.; Zubieta, J. *J. Chem. Soc., Chem. Commun.* **1984**, 1172–1174.(45) Rosenfeld, S. G.; Berends, H. P.; Gelmini, L.; Stephan, D. W.; Mascharak, P. K. *Inorg. Chem.* **1987**, *26*, 2792–2797.(46) Baidya, N.; Olmstead, M.; Mascharak, P. K. *Inorg. Chem.* **1991**, *30*, 929–937.(47) Osakada, K.; Yamamoto, T.; Yamamoto, A.; Takenaka, A.; Sasada, Y. *Acta Crystallogr.* **1984**, *83*, 47.(48) Yamamoto, T.; Sekine, Y. *Inorg. Chim. Acta* **1984**, *83*, 47.(49) Boge, E. M.; Mockler, G. M.; Sinn, E. *Inorg. Chem.* **1977**, *16*, 467.(50) DiVaira, M.; Orioli, P. L.; Sacconi, L. *Inorg. Chem.* **1971**, *10*, 553.

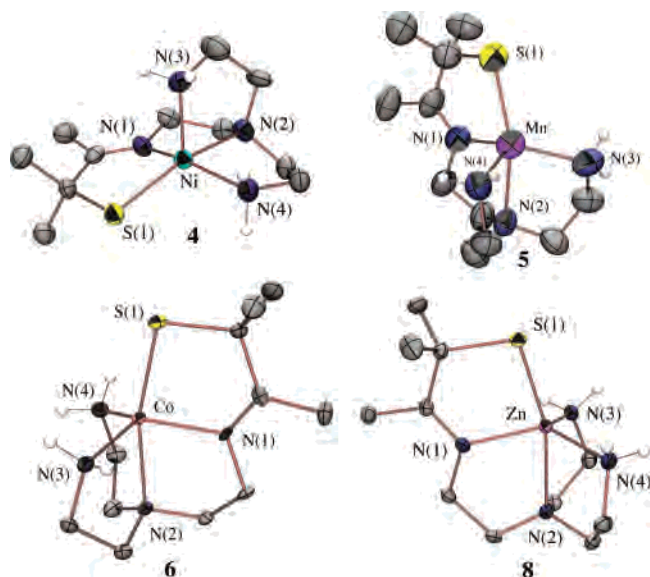


**Figure 2.** Ball-and-stick diagram of dimeric  $[\text{Ni}^{\text{II}}(\text{SN}_4(\text{tren})\text{-RS}^{\text{dang}})]_2$  (**3**) showing the intramolecular contacts between the  $\alpha$ -substituent adjacent to the sulfur and the midpoint between a C–C bond on the other half of the dimer. The model suggests that replacement of the  $\alpha$ -hydrogens with  $\alpha$ -methyls would create steric crowding that disfavors dimer formation.

dangling  $\text{C}(8)=\text{N}(3)$  imine bond, include its distorted bond angles (range of  $111.1\text{--}132.5^\circ$  deviates significantly from ideal  $120^\circ$ ), long bond distance ( $1.303(4)$  Å for  $\text{C}(8)=\text{N}(3)$ ) vs  $1.278(5)$  Å for chelated  $\text{C}(2)=\text{N}(1)$ ), and low  $\nu_{\text{C}=\text{N}}$  stretching frequency ( $1670$  for chelated imine vs  $1616\text{ cm}^{-1}$  for dangling imine); KBr pellet). Because a cocrystallized  $\text{H}_2\text{O}$  appears to be essential for the stabilization of the uncoordinated thiolate  $\text{S}(2)$ , it may be that the packing forces required for the inclusion of  $\text{H}_2\text{O}$  puts strain on the imine.

On the basis of its electronic spectral properties in the solid state (diffuse reflectance data in experimental section) versus solution, it appears the dimeric structure of **3** persists in solution. However, the magnetic data (vide infra) indicate that the two  $\text{Ni}^{2+}$  ions are weakly coupled at ambient temperatures. The close contact ( $3.69$  Å) between  $\text{C}(3)$ ,  $\text{C}(8a)$  (Figure 1), and  $\text{C}(1)$  and the midpoint between  $\text{C}(6a)$  and  $\text{C}(7a)$  (Figure 2), as well as the slight bending of the  $\text{C}(3)$  methyl group away from  $\text{C}(8a)$  in structure **3**, suggested that if one were to insert a bulkier substituent on either the  $\text{C}(3)$  or  $\text{C}(1)$  positions (Figure 1), then dimerization would be prevented. With this in mind, we synthesized the gem-dimethyl derivative of  $\alpha$ -thioacetone, 3-thio-3-methyl-2-butanone ( $\text{CH}_3\text{C}(\text{O})\text{C}(\text{CH}_3)_2\text{SH}$ ).<sup>31</sup> Condensation of this bulkier thioacetone with tren at a  $\text{Ni}^{2+}$  template afforded monomeric  $[\text{Ni}^{\text{II}}(\text{S}^{\text{Me}_2}\text{N}_4(\text{tren}))]^+$  (**4**, Figure 3), which resembles the active site of nickel-containing superoxide dismutase (Ni-SOD).<sup>11,12</sup> This method also afforded monomeric derivatives containing  $\text{Mn}^{2+}$ ,  $\text{Fe}^{2+}$ ,  $\text{Co}^{2+}$ ,  $\text{Cu}^{2+}$ , and  $\text{Zn}^{2+}$ , which are isostructural to one another (Table 1) but structurally distinct from the  $\text{Ni}^{2+}$  complex.

**Synthesis of  $[\text{M}^{\text{II}}(\text{S}^{\text{Me}_2}\text{N}_4(\text{tren}))]^+$  ( $\text{M} = \text{Ni}$  (**4**),  $\text{Mn}$  (**5**),  $\text{Co}$  (**6**),  $\text{Cu}$  (**7**),  $\text{Zn}$  (**8**)).** A metal-templated Schiff-base condensation, identical to that used previously to synthesize  $[\text{Fe}^{\text{II}}(\text{S}^{\text{Me}_2}\text{N}_4(\text{tren}))](\text{PF}_6)$  (**1**),<sup>29</sup> was used to synthesize  $[\text{M}^{\text{II}}(\text{S}^{\text{Me}_2}\text{N}_4(\text{tren}))](\text{PF}_6)$  ( $\text{M} = \text{Mn}$  (**5**),  $\text{Co}$  (**6**),  $\text{Ni}$  (**4**),  $\text{Cu}$  (**7**), and  $\text{Zn}$  (**8**)).



**Figure 3.** ORTEP of the cation of monomeric  $[\text{Ni}^{\text{II}}(\text{S}^{\text{Me}_2}\text{N}_4(\text{tren}))]\text{Cl}$  (**4**),  $[\text{Mn}^{\text{II}}(\text{S}^{\text{Me}_2}\text{N}_4(\text{tren}))](\text{PF}_6)$  (**5**),  $[\text{Co}^{\text{II}}(\text{S}^{\text{Me}_2}\text{N}_4(\text{tren}))](\text{PF}_6)$  (**6**), and  $[\text{Zn}^{\text{II}}(\text{S}^{\text{Me}_2}\text{N}_4(\text{tren}))](\text{PF}_6)$  (**8**) showing the atom labeling scheme. All hydrogen atoms, with the exception of the amine hydrogens, have been removed for clarity.

$(\text{S}^{\text{Me}_2}\text{N}_4(\text{tren}))](\text{PF}_6)$  ( $\text{M} = \text{Mn}$  (**5**),  $\text{Co}$  (**6**),  $\text{Ni}$  (**4**),  $\text{Cu}$  (**7**), and  $\text{Zn}$  (**8**)). The  $\text{Cu}^{2+}$  and  $\text{Zn}^{2+}$  derivatives form readily at room-temperature regardless of the order of reagent addition (amine, thioacetone, and  $\text{M}^{2+}$  salt). The  $\text{Mn}^{2+}$  and  $\text{Fe}^{2+}$  complexes are extremely oxygen sensitive, and colorless solutions develop a purple or red color, respectively, in an inert atmosphere dry box with as little as, or greater than, 2 ppm of  $\text{O}_2$ , as determined using a Teledyne  $\text{O}_2$  analyzer. Although less sensitive to  $\text{O}_2$ , the  $\text{Ni}^{2+}$  and  $\text{Co}^{2+}$  complexes **4** and **6** were found to be extremely sensitive to the order of reagent addition, the temperature, or both. To obtain reasonable yields of **6**, the metal salt,  $\text{CoCl}_2 \cdot 6\text{H}_2\text{O}$ , must be combined with the thioacetone prior to the addition of the amine. This initially affords an insoluble purple precipitate that redissolves upon the addition of tren to afford a green homogeneous solution. To avoid black intractable solids in the preparation of **4**, reactions must be done at low temperatures ( $\leq -40$  °C). If the  $\text{NiCl}_2$  salt is added to the ligand, as opposed to adding the ligand to the  $\text{NiCl}_2$  solution, then significant amounts of black insoluble solids form. An extreme sensitivity to reaction conditions was also observed in the preparation of  $[\text{Ni}^{\text{II}}(\text{S}_2^{\text{Me}_2}\text{N}_3(\text{Pr},\text{Pr}))]^+$ , a water-soluble nickel thiolate complex previously reported by our group.<sup>54</sup> Isolation of single crystals of the  $\text{Mn}^{2+}$ ,  $\text{Co}^{2+}$ ,  $\text{Ni}^{2+}$ ,  $\text{Cu}^{2+}$ , and  $\text{Zn}^{2+}$  derivatives allowed us to determine their structures by X-ray crystallography (Figures 3 and 4). The structure of the  $\text{Fe}^{2+}$  derivative had been previously reported.<sup>29</sup>

**Rare Example of a Stable  $\text{Cu}^{\text{II}}$ –Thiolate.** The copper complex  $[\text{Cu}^{\text{II}}(\text{S}^{\text{Me}_2}\text{N}_4(\text{tren}))]^+$  (**7**, Figure 4) is one of few reported examples of synthetic monomeric  $\text{Cu}^{\text{II}}$ –thiolate complexes.<sup>55–59</sup> Copper(II)–thiolates are typically unstable

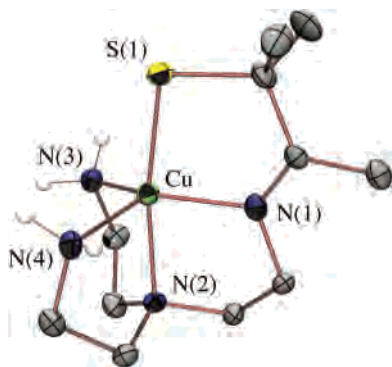
(51) Seleborg, M.; Holt, S. L.; Post, B. *Inorg. Chem.* **1971**, *10*, 1501.

(52) Healy, P. C.; Mockler, G. M.; Freyberg, D. P.; Sinn, E. *J. Chem. Soc., Dalton Trans.* **1975**, 691.

(53) Choudhury, S. B.; Ray, D.; Chakravorty, A. *Inorg. Chem.* **1991**, *30*, 4354.

(54) Shoner, S. C.; Olmstead, M. M.; Kovacs, J. A. *Inorg. Chem.* **1994**, *33*, 7–8.





**Figure 4.** ORTEP of the cation of  $[Cu^{II}(S^{Me_2}N_4(tren))](PF_6)$  (**7**) showing the atom labeling scheme. All hydrogen atoms, with the exception of the amine hydrogens, have been removed for clarity.

and readily convert to disulfides and  $Cu^{+1}$  unless significant amounts of steric bulk are incorporated.<sup>58–60</sup> The first structurally characterized example,  $[Cu^{II}(SC_6F_5)(HB(3,5-Pr_2-pz)_3)]$  (**9**),<sup>55,56</sup> incorporates bulky isopropyl groups and is four coordinate in non-coordinating solvents. Kitajima's model **9** nicely reproduces the properties of blue copper proteins (cupredoxins).<sup>61–63</sup> Blue copper proteins are electron-transport proteins which facilitate rapid electron transfer via a highly covalent  $Cu(II)-SR$  bond and rigid trigonal structure.<sup>64</sup> Key properties reflecting this structure/function relationship include an intense low-energy  $CysS \rightarrow Cu(II)$  CT band near 600 nm ( $\epsilon \geq 3500 M^{-1} cm^{-1}$ ) and an unusually small hyperfine coupling constant ( $A_{||}(Cu) < 80 \times 10^{-4} cm^{-1}$ ) in the axial  $g_{||} > g_{\perp}$  ( $S = 1/2$ ) EPR signal. The small  $A_{||}$  reflects an extensive delocalization of odd spin density onto the thiolate ligand.<sup>5,6</sup> Pseudotetrahedral **9** mimics all of these key properties.<sup>55,56</sup> A three-coordinate example,  $[LCu(II)(SCPh_3)]$  ( $L =$  bulky  $\beta$ -diketiminate),<sup>57</sup> mimics the lower-coordinate laccase blue copper site.<sup>65</sup> Copper(II)–peptide complexes resembling cupredoxins have been assembled using a combinatorial approach,<sup>59</sup> and although approximately 30% of these display the intense low-energy LMCT associated with a  $Cu(II)$ –thiolate, this spectral feature bleaches within minutes of formation. The most stable  $Cu(II)$ –thiolate peptide complexes display blue-shifted  $\sigma S \rightarrow$

$Cu(II)$  CT bands (near  $\sim 400$  nm) characteristic of a distorted tetragonal site.<sup>59</sup> Higher coordination numbers have been shown to stabilize the  $Cu(II)$  oxidation state.<sup>63,66</sup> Synthetic  $Cu(II)$ –thiolate peptide complexes are most stable when assembled in environments that are accessible to solvent, favoring solvent-bound derivatives with higher coordination numbers.<sup>58</sup>

Given the trigonal symmetry of the blue copper site, we reasoned that the tripodal  $[(tren)N_4S^{Me_2}]^{1-}$  ligand would be the ideal environment in which to stabilize a blue-copper-like  $Cu(II)-SR$  with a higher coordination number (five). The gem-dimethyls adjacent to the thiolate, as well as the higher coordination number of **7**, do indeed appear to provide significant stabilization because **7** was found to be indefinitely stable both in solution ( $H_2O$ ,  $MeOH$ ,  $MeCN$ ) and in the solid state and shows no signs of bleaching due to  $Cu(II)$  reduction. The ligand's preferential distortion toward a tetragonal geometry (vide infra) results in a perturbed  $Cu(II)-SR$  site closer to that of the green copper enzyme nitrite reductase.<sup>67</sup>

**Structures of  $[M^{II}(S^{Me_2}N_4(tren))]^+$  ( $M = Ni(4), Mn(5), Co(6), Cu(7),$  and  $Zn(8)$ ).** As shown in the ORTEP diagrams of Figures 3 and 4, the metal ions of **5–8** are all contained in geometrically similar tetragonally distorted ( $\tau$ (range) = 0.564–0.658)<sup>68</sup> trigonal bipyramidal (tbp) environments. The  $Ni^{2+}$  ion of **4**, on the other hand, is contained in an approximately idealized square pyramidal (sq pyr) ( $\tau = 0.011$ )<sup>68</sup> environment. The distortion of **5–8** from idealized geometry ( $\tau$ (ideal tbp) = 1.0;  $\tau$ (ideal sq pyr) = 0.0) is most likely caused by ligand constraints. A similar distortion is observed with Goldberg's five-coordinate  $[Fe^{II}(Py_2S(X))]$  ( $X = Cl^-, Br^-$ ) complexes.<sup>23</sup> For **4–8**, the  $S(1)-M-N(2)$  angle would remain approximately linear for both idealized tbp and sq pyr geometries, lying in the basal plane of the square pyramid and forming the apex of the trigonal bipyramid. The distortion in **5–8** involves the opening of the  $N(1)-M-N(3)$  angle from  $120^\circ$  toward  $180^\circ$  (range from  $124.9^\circ$  in **1** to  $135.9^\circ$  in **7** and  $158.7^\circ$  in **4**), and the compression of the  $N(4)-M-N(3)$  and  $N(4)-M-N(1)$  angles from  $120^\circ$  toward  $90^\circ$  (range from  $115.2^\circ$  in **1** to  $108.8^\circ$  in **7** and  $96.2^\circ$  in **4**). Molecular mechanics calculations (using SPARTAN) consistently minimize to a structure with  $\tau \approx 0.6$ , showing that ligand constraints are responsible for the observed distortions. A square pyramidal  $\tau \approx 0$  structure is only obtained when the angles are constrained, indicating that the geometry of the nickel complex must reflect the geometric preferences of the metal ion driven by a net stabilization of populated antibonding d-orbitals (see Figure S-4). Although the interconversion between idealized trigonal bipyramidal and square pyramidal structures is usually quite facile, this is only when all of the ligands are identical and monodentate.<sup>69</sup> In an asymmetric environment, the barrier to interconversion may

(55) Kitajima, N.; Fujisawa, K.; Tanaka, M.; Moro-oka, Y. *J. Am. Chem. Soc.* **1992**, *114*, 9232–9233.

(56) Kitajima, N.; Fujisawa, K.; Moro-oka, Y. *J. Am. Chem. Soc.* **1990**, *112*, 3210–3212.

(57) Holland, P. L.; Tolman, W. B. *J. Am. Chem. Soc.* **1999**, *121*, 7270–7271.

(58) Daugherty, R. G.; Wasowicz, T.; Gibney, B. R.; DeRose, V. J. *Inorg. Chem.* **2002**, *2623*–2632.

(59) Schnepf, R.; Horth, P.; Bill, E.; Wiegardt, K.; Hildebrandt, P.; Haehnel, W. *J. Am. Chem. Soc.* **2001**, *123*, 2186–2195.

(60) Thompson, J. S.; Marks, T. J.; Ibers, J. A. *J. Am. Chem. Soc.* **1979**, *101*, 4180–4192.

(61) Adman, E. T.; Turley, S.; Bramson, R.; Petratos, K.; Banner, D.; Tsernoglou, D.; Beppu, T.; watanabe, H. *J. Biol. Chem.* **1989**, *264*, 87–99.

(62) Pierloot, K.; De Kerpel, J. O. A.; Ryde, U.; Olsson, M. H. M.; Roos, B. O. *J. Am. Chem. Soc.* **1998**, *120*, 13156–13166.

(63) Randall, D. W.; George, S. D.; Hedman, B.; Hodgson, K. O.; Fujisawa, K.; Solomon, E. I. *J. Am. Chem. Soc.* **2000**, *122*, 11620–11631.

(64) Solomon, E. I.; Baldwin, M. J.; Lowery, M. D. *Chem. Rev.* **1992**, *92*, 521–542.

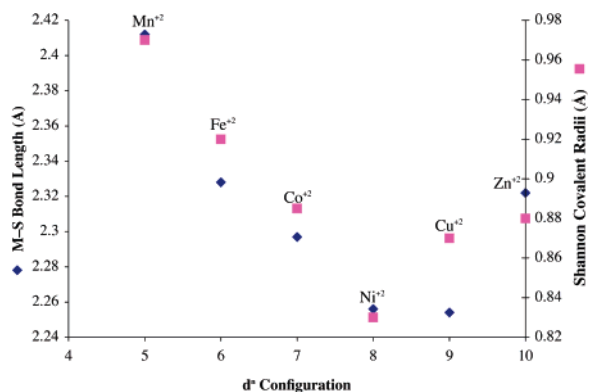
(65) Ducros, V.; Brzozowski, A. M.; Wilson, K. S.; Brown, S. H.; Ostersgaard, P.; Schneider, P.; Yaver, D. S.; Pedersen, A. H.; Davies, G. *J. Nat. Struct. Biol.* **1998**, *5*, 310–316.

(66) Rorabacher, D. B. *Chem. Rev.* **2004**, *104*, 651–697.

(67) LaCroix, L. B.; Shadle, S. E.; Wang, Y.; Averill, B. A.; Hedman, B.; Hodgson, K. O.; Solomon, E. I. *J. Am. Chem. Soc.* **1996**, *118*, 7755–7768.

(68) Addison, A. W.; Rao, T. N.; Reedijk, J. *J. Chem. Soc., Dalton Trans.* **1984**, 1349.

(69) Muetterties, E. L. *Acc. Chem. Res.* **1970**, *3*, 266–273.



**Figure 5.** Plot of experimentally determined M–S bond lengths (Å) for the series  $[M^{II}(SMe_2N_4(tren))]^+$  ( $M = Mn, Fe, Co, Ni, Cu, Zn$ ) (blue diamonds) and Shannon covalent radii (Å) (pink squares) versus  $d^n$ -configuration.

be high,<sup>69,70</sup> and with multidentate ligands, ligand constraints might favor one isomer over the other. In the absence of the condensed thiolate arm, the tripodal tren ligand used in this study would usually favor a trigonal bipyramidal structure.

**Periodic Trends in Bonding.** Bond lengths in 4–8 follow expected periodic trends, decreasing from left to right across the periodic table (from  $Mn^{2+}$  to  $Zn^{2+}$ ; Table 2) with exceptions occurring upon the occupation of antibonding  $e_g$ -( $\sigma$ )<sup>\*</sup> orbitals. The experimentally determined M–S thiolate bond lengths (blue diamonds) are plotted versus the  $d^n$ -configuration in Figure 5 and compared with Shannon covalent radii for high-spin  $M^{2+}$  (pink squares).<sup>71</sup> Metal–sulfur bond lengths are shortest in the  $Cu^{2+}$  complex **7** (2.254(1) Å) and longest in the  $Mn^{2+}$  complex **5** (2.412(3) Å). The short Cu–S bond fits with previously observed trends in M–S(thiolate) covalency<sup>72</sup> and occurs because there is a better energy match between the sulfur  $\pi$ -orbitals and metal ion d-orbitals for a late transition metal (such as  $Cu^{2+}$ ) versus an earlier transition metal (such as  $Mn^{2+}$ ). The short, highly covalent,  $Cu(II)$ –SR bond of **7** is significant, given that this characteristic has been suggested to facilitate rapid electron transfer in blue copper electron-transport proteins.<sup>5,6,61</sup> This bond (Table 2) is noticeably longer than that of the three/four-coordinate (type 1) blue copper proteins (range = 2.1–2.2 Å), as well as that of the four-coordinate  $Cu(II)(SC_6F_5)(HB(3,5\text{-}^iPr_2pz)_3)$  (2.176(4) Å),<sup>55</sup> and that of three-coordinate  $[LCu(II)(SCPh_3)]$  (2.124 Å),<sup>57</sup> reflecting the higher coordination number of **7**. At first glance, the plot of Figure 5 appears to indicate that the  $Cu(II)$ –S thiolate bond of **7** is significantly more covalent than predicted. However, one needs to take into account the fact that Shannon radii are determined for six-coordinate octahedral coordination environments, whereas herein we are looking at a five-coordinate  $\sim$ trigonal bipyramidal (or  $\sim$ square pyramidal) environment. In a trigonal bipyramidal environment, only one  $\sigma^*$  orbital ( $d_z^2$ ) is significantly destabilized, versus two ( $d_z^2$  and  $d_{x^2-y^2}$ ) in an octahedral geometry (Figure S-3). This orbital is singly occupied for  $Mn^{2+}$ ,  $Fe^{2+}$ ,  $Co^{2+}$ ,  $Ni^{2+}$ ,

**Table 3.** Electronic Absorption Transitions for the Series  $[M^{II}(SMe_2N_4(tren))]^+$  ( $M = Mn, Fe, Co, Ni, Cu, Zn$ ) in MeCN

	$\lambda_{max}$ (nm) ( $\epsilon$ ( $M^{-1} cm^{-1}$ ))	$\lambda_{max}$ (nm) ( $\epsilon$ ( $M^{-1} cm^{-1}$ ))	$\lambda_{max}$ (nm) ( $\epsilon$ ( $M^{-1} cm^{-1}$ ))
$[Mn^{II}(SMe_2N_4(tren))]^+$ ( <b>5</b> )	240 (2910)		
$[Fe^{II}(SMe_2N_4(tren))]^+$ ( <b>1</b> )	262 (4700)	357 (sh)	410 (sh)
$[Co^{II}(SMe_2N_4(tren))]^+$ ( <b>6</b> )	236 (4570) 358 (990)	454 (215)	600 (100)
$[Ni^{II}(SMe_2N_4(tren))]^+$ ( <b>4</b> )	275 (2394)	410 (330)	
$[Cu^{II}(SMe_2N_4(tren))]^+$ ( <b>7</b> )	216 (3280) 236 (3400)	380 (3340)	618 (315)
$[Zn^{II}(SMe_2N_4(tren))]^+$ ( <b>8</b> )	219 (4800)		

and  $Cu^{2+}$  but is doubly occupied with  $Zn^{2+}$ , and the dramatic increase in M–S and M–N(2) bond lengths with  $M^{2+} = Zn^{2+}$  versus  $M^{2+} = Co^{2+}, Ni^{2+}, Co^{2+}$ , (Figure 5 and Table 2) reflects this. The significantly higher ionization potential associated with  $Zn^{2+}$  results in a shorter  $Zn(II)$ –S versus  $Mn(II)$ –S bond, however, despite its doubly occupied antibonding  $\sigma^*$  orbital.

**Electronic Properties of  $[M^{II}(SMe_2N_4(tren))]^+$  ( $M = Fe$ -(**1**),  $Ni$ (**4**),  $Mn$ (**5**),  $Co$ (**6**),  $Cu$ (**7**),  $Zn$ (**8**)).** In contrast to the oxidized  $Fe(III)$  thiolate derivatives of the  $[(tren)N_4SMe_2]^{1-}$  ligand, which are low-spin and intensely colored,<sup>29,73</sup> the  $M(II)$  derivatives of this series are high-spin and colorless to moderately colored. The weaker color occurs because the intense  $S \rightarrow M^{+n}$  CT (charge transfer) bands, which dominate the visible spectrum of the  $Fe(III)$  derivatives,<sup>74</sup> fall in the UV region for the early metal  $M(II)$  derivatives (Table 3) or have lower extinction coefficients caused by poorer orbital overlap. Weaker d–d bands are seen at lower energies between 400 and 802 nm (Table 3). The  $d^{10}$   $Zn^{2+}$  and  $d^5$   $Mn^{2+}$  complexes of course lack d–d transitions, because either the d-orbitals are filled or the transitions are both Laporte- and spin-forbidden. The high-energy UV transition associated with the  $Zn^{2+}$  complex must be ligand-centered (possibly imine  $\pi \rightarrow \pi^*$ ). As the metal ion d-orbitals fall in energy closer to those of the sulfur, either upon metal ion oxidation,<sup>74</sup> or moving to the right in the periodic table, the  $S \rightarrow M^{+n}$  CT bands move into the visible region. These trends are also observed for  $[M^{II}\{HB(3,5\text{-}^iPr_2pz)_3\}(SC_6F_5)]$  ( $M = Mn, Fe, Co, Ni, Cu, Zn$ ).<sup>72</sup> Why the  $Cu^{II}$ –SR bond of our complex  $[Cu^{II}(SMe_2N_4(tren))]^+$  (**7**) appears to be less covalent (on the basis of extinction coefficients) than one would expect will be the topic of a separate paper.<sup>75</sup> For each compound in the series,  $[M^{II}(SMe_2N_4(tren))]^+$  ( $M = Mn$  (**5**),  $Fe$  (**1**),  $Co$  (**6**),  $Ni$  (**4**),  $Zn$  (**8**)), the electronic absorption spectra (Figure 6 and S-5–7) are solvent-independent and identical in coordinating (MeCN, pyridine, MeOH) and non-coordinating ( $CH_2Cl_2$ ) solvents, indicating that solvents do not bind to the metal. This is surprising given their electron-deficient nature and the scarcity of five-coordinate structures.

(70) Sacconi, L.; Bertini, I. *J. Am. Chem. Soc.* **1968**, *90*, 5443–5446.

(71) Shannon, R. D. *Acta Crystallogr.* **1976**, *A32*, 751–767.

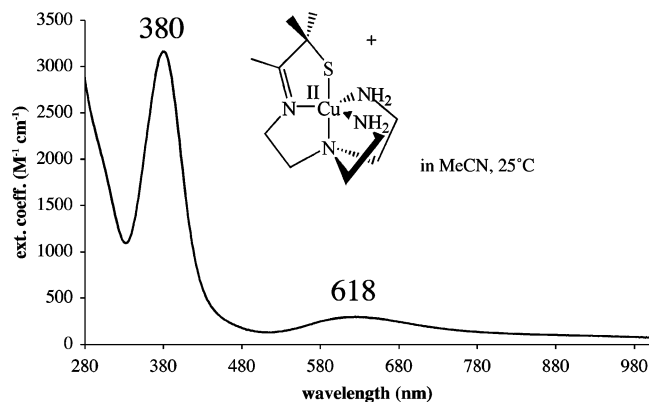
(72) Gorelsky, S. I.; Basumallick, L.; Fura-Weis, J.; Sarangi, R.; Hodgson, K. O.; Hedman, B.; Fujisawa, K.; Solomon, E. I. *Inorg. Chem.* **2005**, *44*, 4947–4960.

(73) Shearer, J.; Fitch, S. B.; Kaminsky, W.; Benedict, J.; Scarrow, R. C.; Kovacs, J. A. *Proc. Natl. Acad. Sci., U.S.A.* **2003**, *100*, 3671–3676.

(74) Kennepohl, P.; Neese, F.; Schweitzer, D.; Jackson, H. L.; Kovacs, J. A.; Solomon, E. I. *Inorg. Chem.* **2005**, *44*, 1826–1836.

(75) Xie, X.; Brines, L. M.; Shearer, J.; Kovacs, J. A.; Solomon, E. I. Unpublished work.



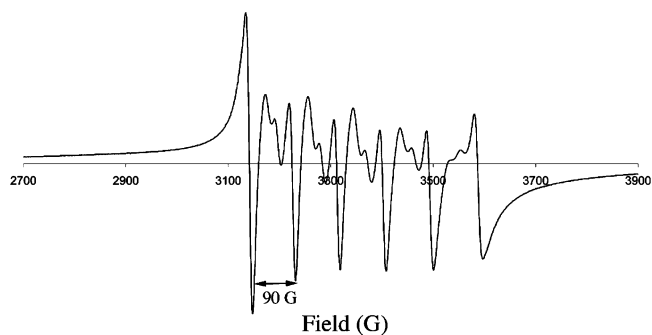


**Figure 6.** Electronic absorption spectrum of  $[Cu^{II}(S^{Me_2}N_4(tren))](PF_6)$  (**7**) in MeCN at ambient temperature.

In contrast, the alkoxide and amine derivatives readily bind solvents or coordinating anions implying that the thiolate sulfur decreases the metal ion's Lewis acidity.<sup>21</sup>

**Perturbed Green Copper Protein Site Analogue.** Solutions of  $[Cu^{II}(S^{Me_2}N_4(tren))]^+$  (**7**) are sensitive to H-bonding solvents. In MeCN, the complex is green with an intense band at 380 (3340) nm and a weaker band at 618 (315) (Figure 6, Table 3). In water, complex **7** is turquoise blue, and these bands blue shift to 358 (1719) and 640 (126) (Figure S-8). This is most likely caused by H-bonding interactions between the protic solvent and thiolate lone-pairs.<sup>76</sup> The relative intensities of the two bands in Figure 6 are in contrast to the electronic absorption properties of the cupredoxins (blue copper proteins). Cupredoxins display a significantly more-intense transition ( $\epsilon \approx 3000\text{--}6000\text{ M}^{-1}\text{ cm}^{-1}$ ) near 600 nm and a much less-intense transition ( $\epsilon < 1000\text{ M}^{-1}\text{ cm}^{-1}$ ) near 400 nm.<sup>5,64</sup> In fact, the absorption spectrum (and color) of **7** more closely resembles that of the highly perturbed “green Cu” sites of nitrite reductase,<sup>67,77</sup> stellacyanin, and plantacyanin.<sup>78</sup> The green color of these biological Cu sites arises from the combination of a blue ( $\sim 600$  ( $\sim 1800$ ) nm)  $\pi S \rightarrow Cu(II)$  transition and yellow ( $\sim 400$  ( $\sim 3000$ ) nm)  $\sigma S \rightarrow Cu(II)$  transition. Structural and electronic perturbations suggested to account for the differences between blue and green copper proteins, include an increased ligand-field strength, an increase in coordination number,<sup>62</sup> a longer Cu(II)–SR bond, and a reorientation of the sulfur  $\pi$ -orbitals (relative to the metal d-orbitals) that reduces the extent of  $\pi$ -overlap in the Cu–SR bond. Consistent with one of these explanations, when the fourth ligand of nitrite reductase is replaced with a non-coordinating ligand, the intensity of the blue  $\pi S \rightarrow Cu(II)$  band (near 600 nm) increases, while that of the yellow  $\sigma S \rightarrow Cu(II)$  band (near 400 nm) decreases.<sup>77</sup> The significantly weaker intensity of the lower-energy band (Figure 6, Table 3) indicates that there is much less  $\pi$ -overlap in five-coordinate **7**, relative to 3–4-coordinate blue copper proteins ( $\epsilon \approx 5000\text{ M}^{-1}\text{ cm}^{-1}$ ),<sup>64</sup>

(76) Jackson, H. L.; Shoner, S. C.; Rittenberg, D.; Cowen, J. A.; Lovell, S.; Barnhart, D.; Kovacs, J. A. *Inorg. Chem.* **2001**, *40*, 1646–1653.  
 (77) Basumallick, L.; Szilagy, R. K.; Zhao, Y.; Shapleigh, J. P.; Scholes, C. P.; Solomon, E. I. *J. Am. Chem. Soc.* **2003**, *125*, 14784–14792.  
 (78) LaCroix, L. B.; Randall, D. W.; Nersissian, A. M.; Hoitink, C. W. G.; Canters, G. W.; Valentine, J. S.; Solomon, E. I. *J. Am. Chem. Soc.* **1998**, *120*, 9621–9631.



**Figure 7.** X-band EPR spectrum of  $[Mn^{II}(S^{Me_2}N_4(tren))](PF_6)$  (**5**) at 5 K in MeOH/EtOH (9:1) glass. Microwave frequency = 9.42 GHz.

as well as Tolman's 3-coordinate Cu(II)–SR ( $\epsilon = 5800\text{ M}^{-1}\text{ cm}^{-1}$ ).<sup>57</sup> The origin of the electronic absorption spectral bands for **7**, in relation to the blue, green, and red Cu protein sites,<sup>5</sup> will be the subject of a separate paper.<sup>75</sup>

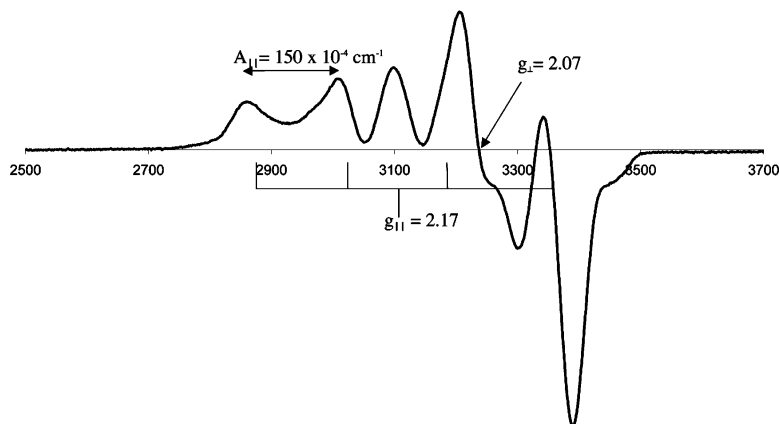
**Magnetic Properties of  $[M^{II}(S^{Me_2}N_4(tren))]^+$  ( $M = Fe$ (**1**),  $Ni$ (**4**),  $Mn$ (**5**),  $Co$ (**6**),  $Cu$ (**7**),  $Zn$ (**8**)).** The ligand-field provided by the pentadentate thiolate-containing  $[(tren)-N_4S^{Me_2}]^{1-}$  ligand is not strong enough to pair more electrons relative to the free  $M^{+2}$  ion. This is true even for the square pyramidal  $Ni^{2+}$  complex, which is  $S = 1$  as opposed to  $S = 0$  (Figures S-9 and S-11). One might have anticipated that a driving force for the geometry change with  $Ni^{2+}$  involved a spin-state change  $S = 1 \rightarrow S = 0$ ; however, **4** was found to be  $S = 1$  over the entire temperature range examined ( $T = 4\text{--}200\text{ K}$ , Figure S-11). The ambient-temperature magnetic moment of dimeric  $[Ni^{II}(SN_4(tren)-RS^{dang})]_2$  (**3**, Figure 1) in  $H_2O$  ( $\mu_{eff}(H_2O) = 2.89\ \mu_B/Ni$ ) is also consistent with an  $S = 1$  high-spin state, with very little coupling between the  $Ni^{2+}$  ions. This is not too surprising given that there are other examples of weakly coupled dimeric  $Ni^{2+}$  complexes.<sup>46</sup> Solution magnetic moments for **1** and **5–7** are consistent with a sequential drop in the number of unpaired electrons from five to one as one proceeds through the series  $Mn^{2+}$  ( $\mu_{eff} = 6.01\ \mu_B$ ),  $Fe^{2+}$  ( $\mu_{eff} = 5.39\ \mu_B$ ),<sup>79</sup>  $Co^{2+}$  ( $\mu_{eff} = 4.05\ \mu_B$ ),  $Ni^{2+}$  ( $\mu_{eff} = 2.86\ \mu_B$ ), and  $Cu^{2+}$  ( $\mu_{eff} = 1.97\ \mu_B$ ), and in the solid state, the temperature-dependent inverse magnetic susceptibility plots are linear (Figures S-10 and S-11) and obey the Curie law. Although rare for a five-coordinate first-row metal ion, thiolates *have* been shown to stabilize low-spin five-coordinate metal ions, but this typically involves the metal in a higher oxidation state.<sup>31,39</sup> Upon oxidation, the iron<sup>29</sup> and cobalt<sup>80</sup> complexes **1** and **6** convert to low-spin ( $S = 1/2, 0$ , respectively) six-coordinate structures. The X-band EPR data verified that the odd-electron systems possess a high-spin ground-state (Figures 7, 8, and S-12). For example, the EPR spectrum of Figure 7 demonstrates that the manganese complex **5** is  $S = 5/2$ . The 90 G separation between the six main features of the multilined spectrum is consistent with a mononuclear structure<sup>81,82</sup> and arises from the coupling between the unpaired electrons and

(79) Theisen, R. M. Ph.D. thesis, University of Washington, Seattle, Washington, 2005.

(80) Swartz, R. D.; Kovacs, J. A. Manuscript in preparation.

(81) Howard, T.; Telsler, J.; DeRose, V. J. **2000**, *Inorg. Chem.* 3379–3385.

(82) Reed, G. H.; Markham, G. D. In *Biological Magnetic Resonance*; Plenum Press: New York, 1984; Vol. 6, pp 73–135.



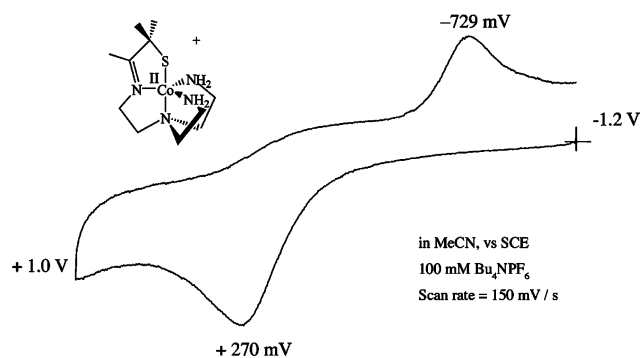
**Figure 8.** X-band EPR spectrum of  $[\text{Cu}^{\text{II}}(\text{SMe}_2\text{N}_4(\text{tren}))](\text{PF}_6)$  (**7**) at 77 K in MeOH/EtOH (9:1) glass. Microwave frequency = 9.39 GHz.

**Table 4.** Redox Potentials for the Series  $[\text{M}^{\text{II}}(\text{SMe}_2\text{N}_4(\text{tren}))]^+$  (M = Mn, Fe, Co, Ni, Cu, Zn)

	$E_{1/2}$ (vs SCE) oxidation	$E_{1/2}$ (vs SCE) reduction
$[\text{Mn}^{\text{II}}(\text{SMe}_2\text{N}_4(\text{tren}))]^+$ ( <b>5</b> )	+140 mV (quasi-rev)	+705 mV
$[\text{Fe}^{\text{II}}(\text{SMe}_2\text{N}_4(\text{tren}))]^+$ ( <b>1</b> )	-150 mV (quasi-rev) <sup>79</sup>	
$[\text{Co}^{\text{II}}(\text{SMe}_2\text{N}_4(\text{tren}))]^+$ ( <b>6</b> )	+270 mV (irrev, $E_p^a$ )	
$[\text{Ni}^{\text{II}}(\text{SMe}_2\text{N}_4(\text{tren}))]^+$ ( <b>4</b> )	+325 mV (irrev, $E_p^a$ )	
$[\text{Cu}^{\text{II}}(\text{SMe}_2\text{N}_4(\text{tren}))]^+$ ( <b>7</b> )	+690 mV (irrev, $E_p^a$ )	-703 mV (quasi-rev)
$[\text{Zn}^{\text{II}}(\text{SMe}_2\text{N}_4(\text{tren}))]^+$ ( <b>8</b> )	+1.10 V (irrev, $E_p^a$ )	

the  $I = 5/2$   $^{55}\text{Mn}$  (100% natural abundance) nucleus. The additional inner features arise from zero-field splitting.<sup>83–85</sup> The near axial EPR signal of **7** (Figure 8) with  $g_{\parallel} > g_{\perp}$  ( $g_{\parallel} = 2.17$  and  $g_{\perp} = 2.07$ ) is typical for Cu(II) and consistent with a singly occupied and highly delocalized  $d_{x^2-y^2}$  HOMO in a distorted site. Although the complexity of the spectrum and slight rhombicity requires higher resolution Q-band data to obtain more accurate fits,<sup>75</sup> the estimated hyperfine coupling to the  $I = 3/2$  Cu ion of **7** ( $A_{\parallel}(\text{Cu}) = 150 \times 10^{-4} \text{ cm}^{-1}$ ) is significantly larger than that of blue copper proteins ( $A_{\parallel}(\text{Cu})$  reported range =  $37 \times 10^{-4}$  to  $63 \times 10^{-4} \text{ cm}^{-1}$ ),<sup>64</sup> Kitajima's Cu–(SC<sub>6</sub>F<sub>5</sub>)(HB(3,5-<sup>i</sup>Pr<sub>2</sub>pz)<sub>3</sub>) ( $A_{\parallel}(\text{Cu}) = 54 \times 10^{-4} \text{ cm}^{-1}$ ,  $g_{\parallel} = 2.30$ ) and Cu(SCPh<sub>3</sub>)(HB(3,5-<sup>i</sup>Pr<sub>2</sub>pz)) ( $A_{\parallel}(\text{Cu}) = 74 \times 10^{-4} \text{ cm}^{-1}$ ,  $g_{\parallel} = 2.23$ ),<sup>55</sup> and Tolman's 3-coordinate [LCu(II)(SCPh<sub>2</sub>(CH<sub>2</sub>OCH<sub>3</sub>))] ( $A_{\parallel} = 111 \times 10^{-4} \text{ cm}^{-1}$ ,  $g_{\parallel} = 2.17$ ,  $g_{\perp} = 2.04$ ),<sup>57</sup> but less than that of five-coordinate Cu(II) complexes lacking thiolate ligands.<sup>86</sup> This indicates that the Cu(II)–SR bond in **7** is significantly less covalent than that of the blue copper proteins but more covalent than Cu(II)–O or Cu(II)–N bonds.

**Redox Properties of  $[\text{M}^{\text{II}}(\text{SMe}_2\text{N}_4(\text{tren}))]^+$  (M = Fe(**1**), Ni(**4**), Mn(**5**), Co(**6**), Cu(**7**), Zn(**8**)).** As shown by the redox potentials of Table 4, the [(tren)N<sub>4</sub>SMe<sub>2</sub>]<sup>1-</sup> ligand stabilizes the late first-row metal ions Ni<sup>2+</sup> and Cu<sup>2+</sup> in the +2



**Figure 9.** Cyclic voltammogram of  $[\text{Co}^{\text{II}}(\text{SMe}_2\text{N}_4(\text{tren}))](\text{PF}_6)$  (**6**) in MeCN at 298 K (0.1 M (Bu<sub>4</sub>N)PF<sub>6</sub>, glassy carbon electrode, 150 mV s<sup>-1</sup> scan rate). Peak potentials vs SCE indicated.

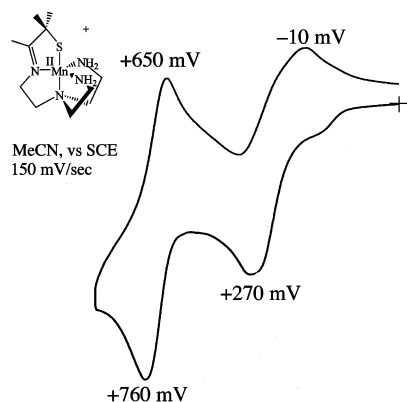
oxidation state. The high-coordination number imposed by the ligand makes the reduced Cu<sup>+1</sup> state of **7** accessible only at a fairly negative potential (Figure S-14,  $E_{1/2} = -703 \text{ mV}$  vs SCE). This is in contrast to the lower-coordinate trigonal Cu(II) center of type 1 blue copper proteins, which are reduced in the potential range of +680 (rusticyanin) to +240 mV (auracyanin) vs NHE.<sup>64</sup> Although the +3 oxidation state is accessible with relatively mild oxidants for the earlier transition metals (manganese, iron, and cobalt (Figure 9)), the waves are quasireversible (to irreversible) because the structures change upon oxidation to accommodate the binding of a sixth ligand.<sup>29,80</sup> Re-reduction of the solvent-bound cobalt(III) complex is also irreversible on the CV time-scale because MeCN solvent loss occurs upon reduction. The Co<sup>3+</sup> → Co<sup>2+</sup> re-reduction potential ( $E_p^c = -729 \text{ mV}$  vs SCE; Figure 9) is dramatically shifted relative to the Co<sup>2+</sup> → Co<sup>3+</sup> oxidation potential ( $E_p^a = +270 \text{ mV}$  vs SCE), reflecting the increased stability of the six-coordinate, solvent-bound Co<sup>3+</sup> ion. Ferrocenium-induced oxidation of **1** and **6** in MeCN affords the corresponding solvent-bound  $[\text{M}^{\text{III}}(\text{SMe}_2\text{N}_4(\text{tren}))(\text{MeCN})]^{2+}$  (M = Fe,<sup>29</sup> Co)<sup>80</sup> complexes. The structure of the iron(III) complex was reported previously.<sup>29</sup> Irreversible oxidation of **4** (Figure S-13) and **7** (Figure S-14) to Ni<sup>3+</sup> and Cu<sup>3+</sup> occurs at potentials of +325, and +690 mV vs SCE, respectively. The +4 oxidation state is accessible for the manganese complex at a slightly higher, reversible potential of +705 mV vs SCE (Figure 10). An irreversible ligand-centered oxidation, apparent in the zinc complex (Figure S-15), occurs at potentials greater than +1.0 V.

(83) Allen, B. T. *J. Chem. Phys.* **1965**, *43*, 3820–3826.

(84) Morrissey, S. R.; Horton, T. E.; DeRose, V. J. *J. Am. Chem. Soc.* **2000**, *122*, 3473–3481.

(85) Vogt, M. Ph.D. Thesis. Texas A&M, College Station, TX, 2004.

(86) Marlin, D. S.; Olmstead, M. M.; Mascharak, P. K. *Inorg. Chem.* **2001**, *40*, 7003–7008.



**Figure 10.** Cyclic voltammogram of  $[Mn^{II}(S^{Me_2}N_4(tren))](PF_6)$  (**5**) in MeCN at 298 K (0.1 M  $(Bu_4N)PF_6$ , glassy carbon electrode, 150  $mV\ s^{-1}$  scan rate). Peak potentials vs SCE indicated.

**Summary and Conclusions.** A comparison of the electronic, magnetic, and structural properties of a series of five-coordinate first-row transition metal ions ( $M^{2+}$ ;  $M = Mn, Fe, Co, Ni, Cu, Zn$ ) ligated by a tripodal thiolate-containing ligand  $[(tren)-N_4S^{Me_2}]^{1-}$  demonstrates an adherence to expected periodic trends with exceptions occurring upon the occupation of  $\sigma^*$  orbitals. Gem-dimethyls adjacent to the sulfur prevent dimerization. All of the complexes, with the exception of  $[Ni^{II}(S^{Me_2}N_4(tren))]^+$ , are isostructural and adopt a tetragonally distorted trigonal bipyramidal geometry favored by ligand constraints. Geometric preferences of the metal ion driven by a net stabilization of populated antibonding d-orbitals control the structure of the  $Ni^{2+}$  complex. The  $M-SR$  bond lengths decrease across the periodic table

and are most covalent in the  $Cu(II)-SR$  and  $Ni(II)-SR$  complexes. The copper complex electronically resembles the green copper proteins and is a rare example of a stable  $Cu(II)-thiolate$ . The nickel complex resembles the active site of nickel superoxide dismutase. In contrast to the intensely colored, low-spin  $Fe(III)-thiolates$ , the  $M(II)-thiolates$  described herein are colorless to moderately colored and high-spin, reflecting the poorer energy match between the metal d- and sulfur orbitals upon reduction of the metal ion. As the d-orbitals drop in energy proceeding across the periodic table, the sulfur-to-metal charge-transfer transition moves into the visible region, and the  $M-SR$  bonds become more covalent. The redox potentials cathodically shift across the series  $M^{2+}$  ( $M = Mn, Fe, Co, Ni, Cu$ ); the reduced  $M^{+1}$  oxidation state is only accessible with the later transition metal copper, and the more oxidized  $M^{+4}$  oxidation state is only accessible for the early transition metal manganese. Future work will include reactivity studies involving dioxygen, and the characterization of higher-valent derivatives.

**Acknowledgment.** This work was supported by the NIH (Grant Number: GM 45811). We thank Vickie DeRose and Brandon Green for helpful discussion. We thank Santiago Toledo, Erika Shaffer, and Morgan Gleaves for experimental assistance.

**Supporting Information Available:** Crystallographic data and electronic absorption spectra for **1–5**. This material is available free of charge via the Internet at <http://pubs.acs.org>.

IC701433P